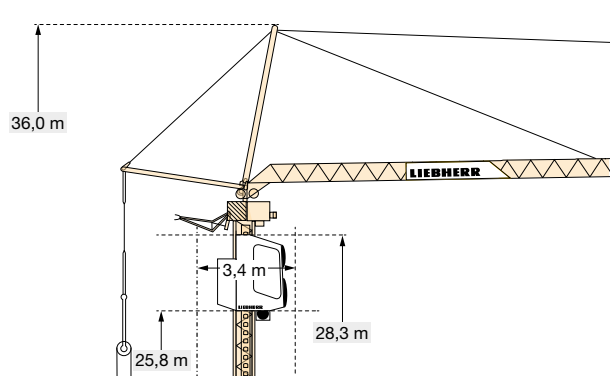
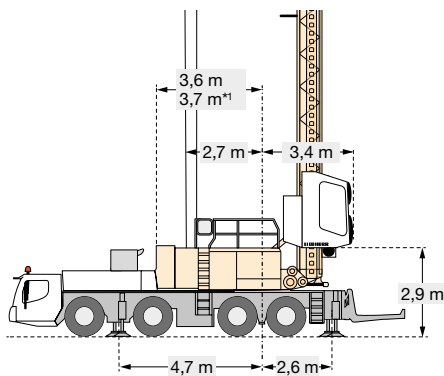
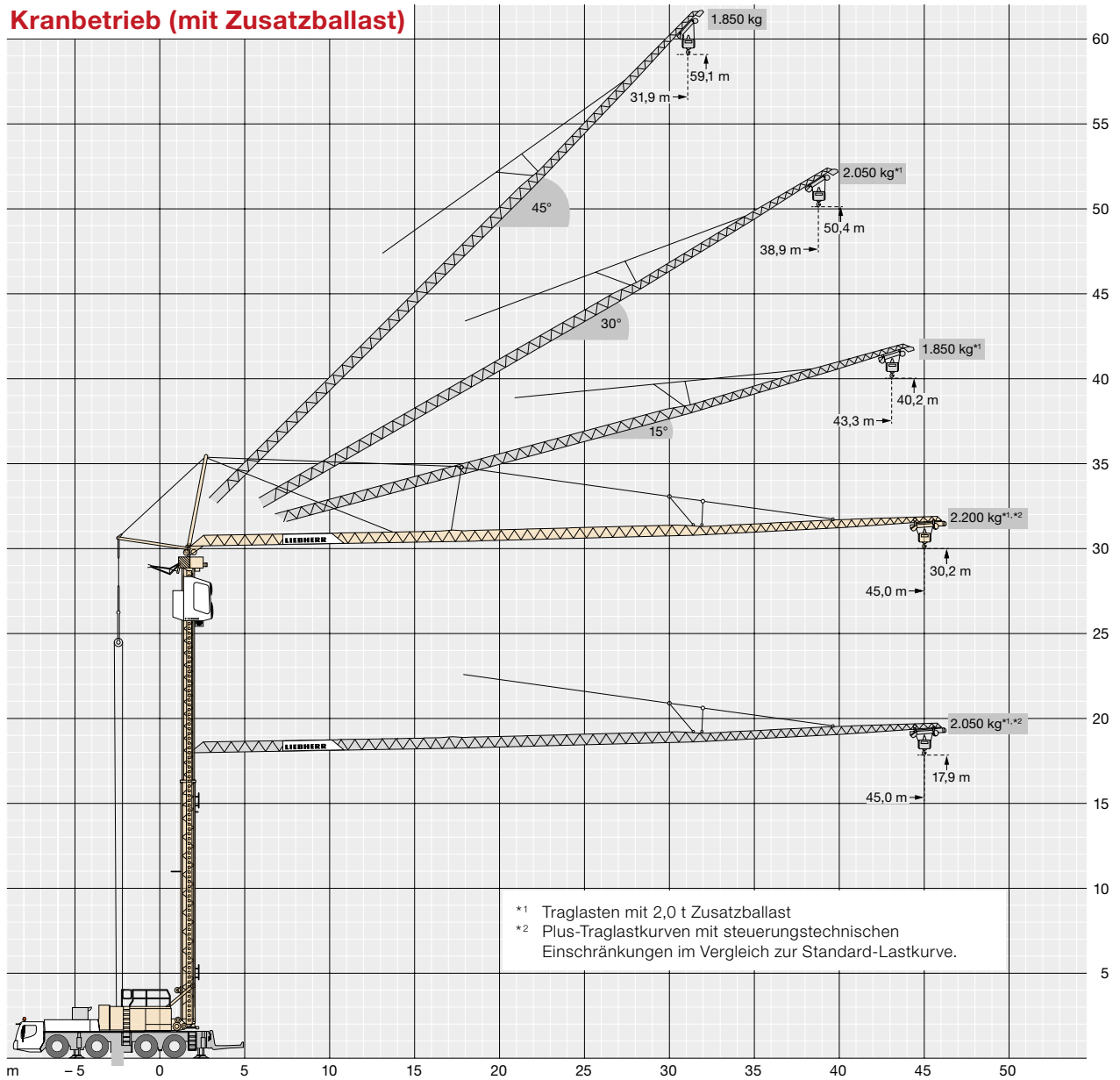


## Mobilbaukran MK 88 PLUS flott. kompakt. wendig.



■ Maximale Traglast	<b>8.000 kg</b>
■ Maximale Ausladung	<b>45 m</b>
■ Höchste Traglast an der Spitze	<b>2.200 kg</b> (mit Zusatzballast)
■ Höchste Hakenhöhe	<b>59,1 m</b>
■ Steilstellungen	<b>15° / 30° / 45°</b>
■ Hohe Montagekurve	

## Kranbetrieb (mit Zusatzballast)













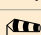



















## Traglasten mit 2 Tonnen Zusatzballast

 7,30 x 7,0 m    
  = max. 14,1 m/s (6,5 Bft)    
  = max. 17,0 m/s (7,0 Bft)    
  = max. 20,0 m/s (8,0 Bft)

				m																			
$\alpha^\circ$	m	kg	10,0	12,0	14,0	16,0	18,0	20,0	22,0	24,0	26,0	28,0	30,0	32,0	34,0	36,0	38,0	40,0	42,0	44,0	45,0		
0°	45,0		3,3-12,0	8000	8000	8000	6910	6080	5410	4870	4420	4050	3730	3450	3200	2990	2800	2630	2480	2340	2220	2100	2050
			3,3-11,0	8000	8000	7370	6360	5580	4960	4460	4050	3700	3400	3140	2920	2720	2540	2390	2250	2120	2000	1900	1850
	Plus*		3,3-13,0	8000	8000	8000	7510	6670	5990	5420	4931	4520	4160	3840	3560	3320	3100	2900	2720	2550	2400	2260	2200
15°	43,3		3,2-43,4	1850	1850																		
			3,2-38,2	1850	1850												1600						
	Plus		3,2-32,0	2600	2600										2430	2290	2150	2030	1920	1850			
			3,2-27,8	2600	2600								2580	2400	2240	2100	1970	1860	1760	1660	1600		
30°	38,9		3,0-12,0	6000	6000	5050	4560	4150	3810	3510	3250	3030	2830	2650	2490	2350	2220	2050					
			3,0-9,0	6000	5620	4970	4450	4020	3660	3360	3100	2870	2670	2490	2340	2200	2070	1950	1800				
45°	31,9		2,7-31,9	1850	1850																		
			2,7-28,3	1850	1850												1600						
	Plus		2,7-23,0	2800	2800								2670	2430	2230	2050	1900						
			2,7-19,5	2800	2800				2730	2460	2230	2040	1870	1730	1600								

\* Plus-Traglastkurven mit steuerungstechnischen Einschränkungen im Vergleich zur Standard-Lastkurve. → kg

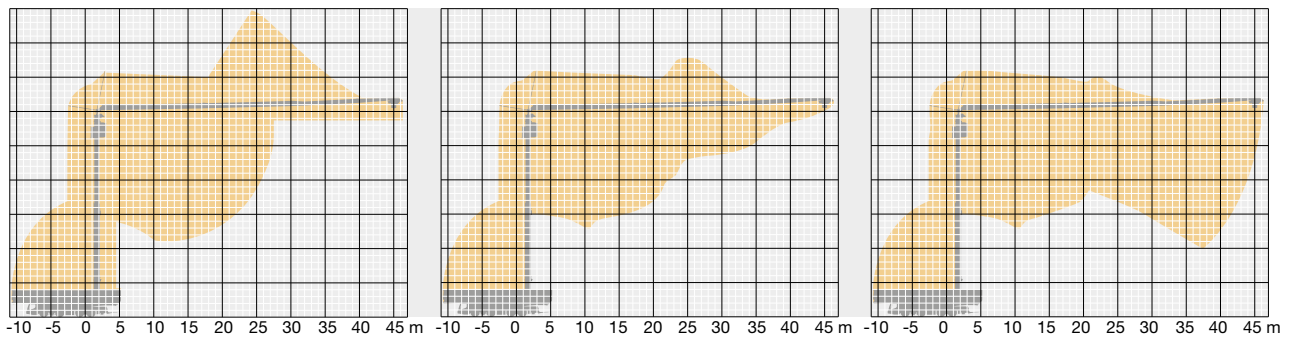
 7,30 x 5,75 m    
  = max. 14,1 m/s (6,5 Bft)    
  = max. 17,0 m/s (7,0 Bft)    
  = max. 20,0 m/s (8,0 Bft)

				m																			
$\alpha^\circ$	m	kg	10,0	12,0	14,0	16,0	18,0	20,0	22,0	24,0	26,0	28,0	30,0	32,0	34,0	36,0	38,0	40,0	42,0	44,0	45,0		
0°	45,0		3,3-10,5	8000	8000	6930	5870	5080	4470	3980	3580	3250	2970	2730	2520	2340	2180	2030	1910	1790	1690	1590	1550
			3,3-9,3	8000	7410	6100	5170	4480	3940	3500	3150	2860	2610	2400	2210	2050	1910	1780	1670	1570	1470	1390	1350
	Plus*		3,3-11,5	8000	8000	7620	6410	5510	4830	4280	3840	3480	3170	2910	2690	2490	2320	2170	2030	1910	1800	1700	1650
15°	43,3		3,2-36,0	1850	1850																		
			3,2-34,0	1850	1850												1400						
	Plus		3,2-26,0	2600	2600										2410	2250	2100	1970	1850	1740	1650	1560	1500
			3,2-24,7	2600	2600								2470	2280	2120	1980	1850	1740	1630	1540	1460	1400	
30°	38,9		3,0-11,0	6000	6000	5580	4880	4320	3880	3510	3200	2930	2700	2500	2330	2180	2040	1910	1750				
			3,0-9,0	6000	5480	4650	4030	3540	3150	2830	2570	2340	2150	1980	1830	1700	1590	1490	1350				
45°	31,9		2,7-31,9	1850	1850																		
			2,7-24,0	1850	1850												1600						
	Plus		2,7-28,3	2800	2800								2670	2430	2230	2050	1900						
			2,7-19,5	2800	2800				2730	2460	2230	2040	1870	1730	1600								

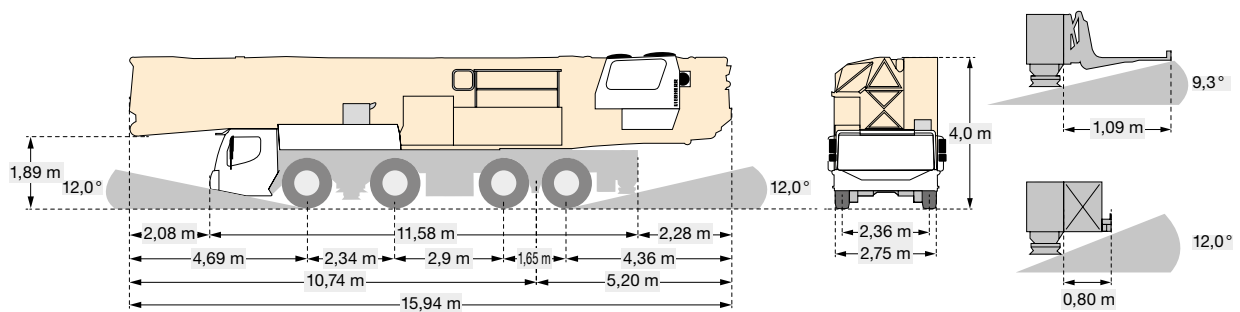
\* Plus-Traglastkurven mit steuerungstechnischen Einschränkungen im Vergleich zur Standard-Lastkurve. → kg



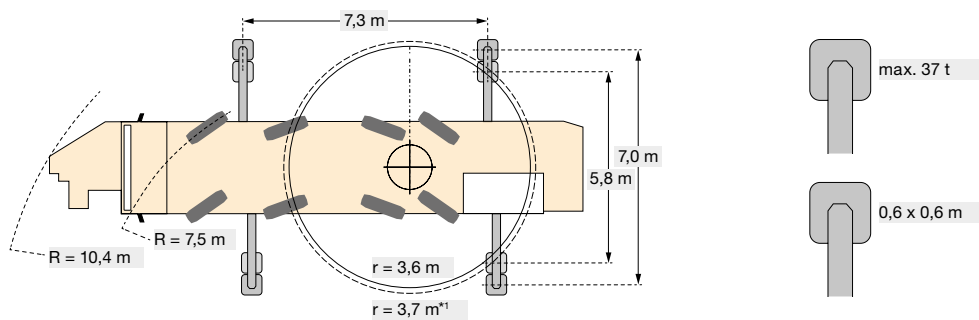
## Aufstellvorgang



## Transport

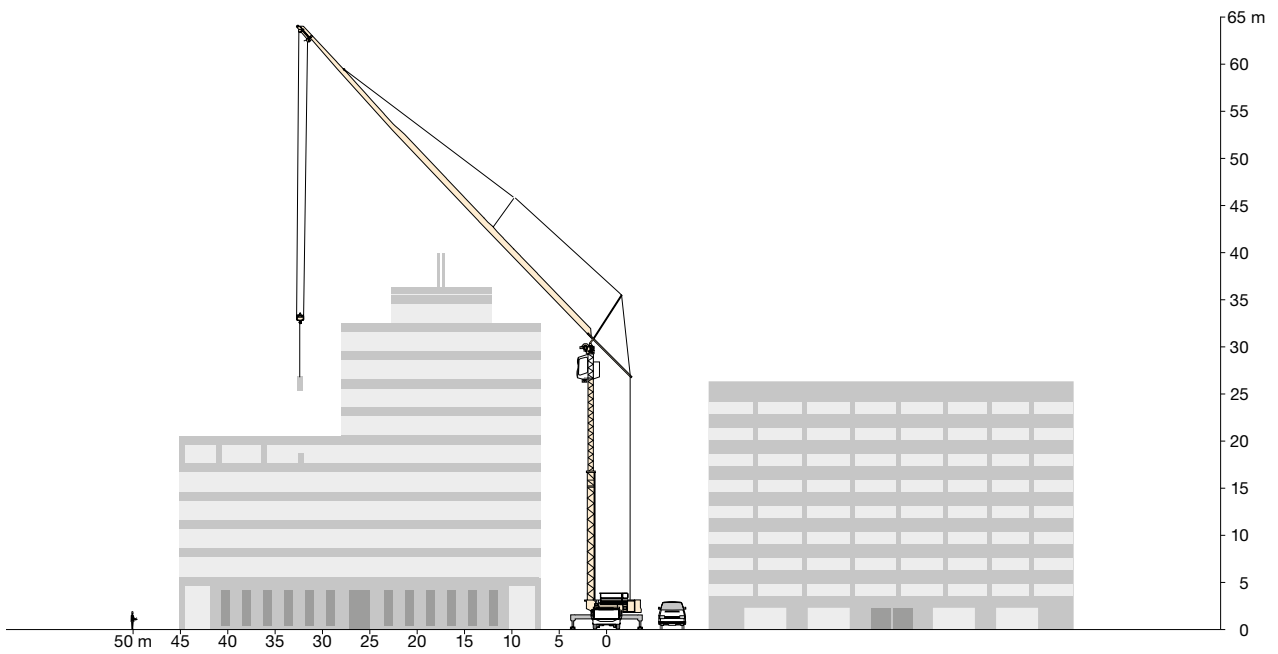
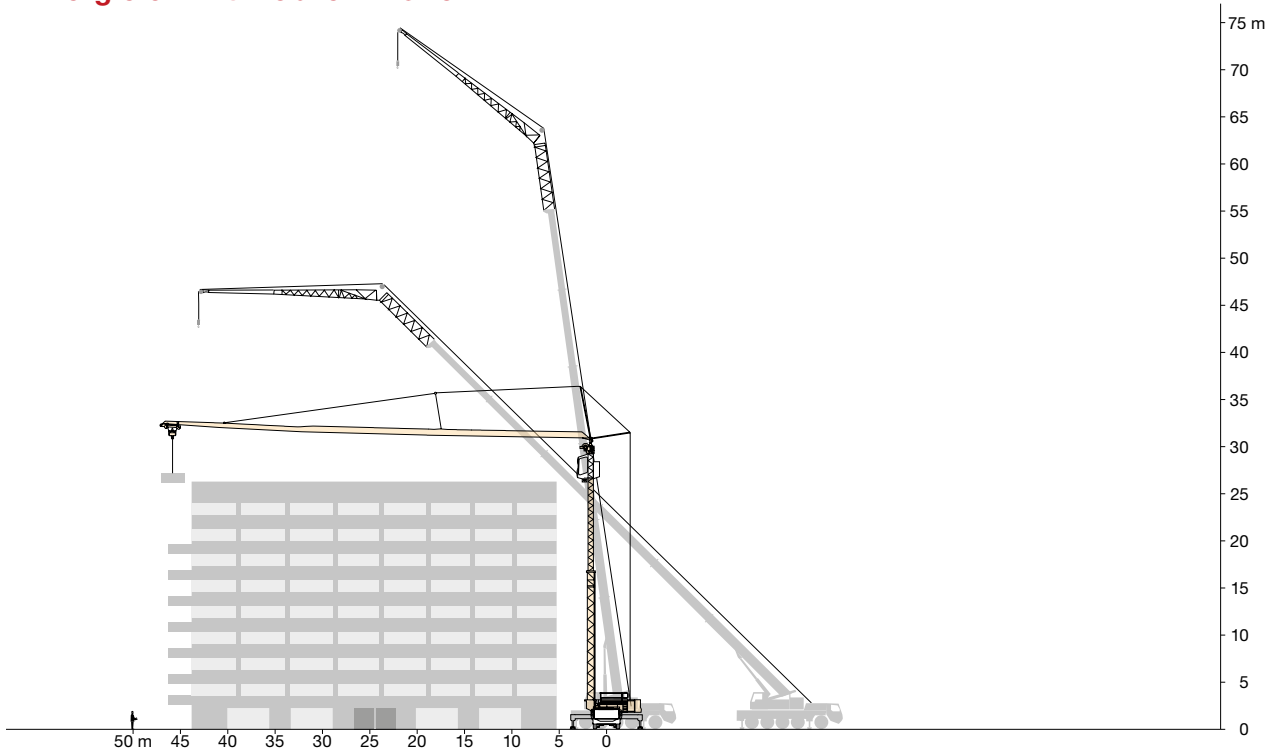


## Draufsicht





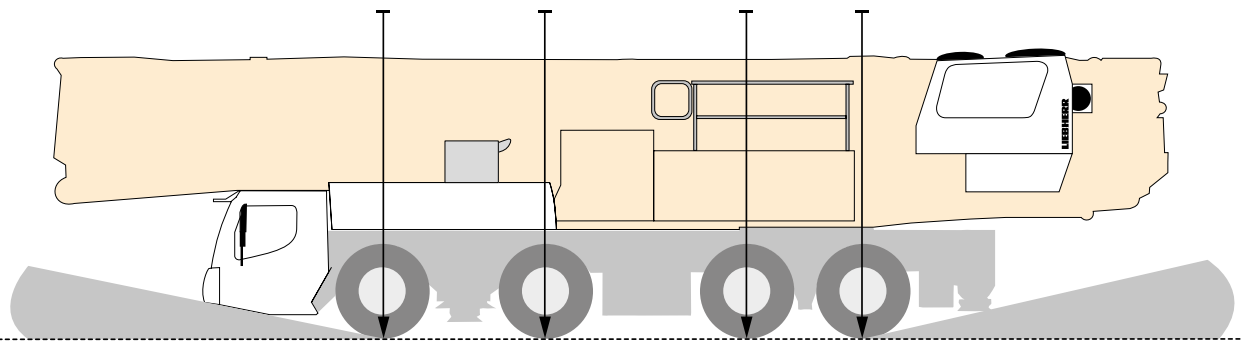
## Im Vergleich mit mobilen Kränen







## Achslasten



		-	< 10.000 kg	< 10.000 kg	< 10.000 kg	< 10.000 kg	< 40.000 kg
Ballast		4,3 t	< 11.000 kg	< 11.000 kg	< 11.000 kg	< 11.000 kg	< 44.000 kg
		9,3 t	< 12.000 kg	< 12.000 kg	< 12.000 kg	< 12.000 kg	< 48.000 kg
		11,3 t	< 13.000 kg	< 13.000 kg	< 13.000 kg	< 13.000 kg	< 50.000 kg

# Kontakt

## Haben wir Ihr Interesse geweckt?

Gerne erstellen wir ein persönliches und unverbindliches Angebot. Bitte kontaktieren Sie uns!

**Hermann Sandhofer**

+43 50 992 509 oder +43 664 60 555 509

logistik@schmid-baugruppe.at

www.schmid-baugruppe.at